

# CM4 Sensing

通过Raspberry Pi感知物联网的世界



POWERED BY  
**Raspberry Pi**

## CPU

ARM Cortex-A72,  
Quad Core

## DDR

LPDDR4,  
最高支持8GB

## 存储

最高支持32GB eMMC,  
同时支持micro SD卡

## 全覆盖网络

千兆以太网,  
双频WiFi | BT 5.0,  
可选4G LTE支持

## 支持多种感知网络

1x RS232 | 4x RS485,  
1x CAN,  
1x RTC | 1x Buzzer

## 支持Mini PCIe

1-lane PCIe 2.0, 最高支持  
5Gbps, 1x USB 2.0

## 多路显示接口

1x Full HDMI | 1x FPC HDMI,  
1x DSI Touch Display

## 极致散热性能

超大一整面CNC铝合金散热片,  
全速运行于-25 ~ 60°C环境温度

## 小巧全金属机身

支持DIN导轨安装  
103(L) x 73(W) x 32(H) mm

## Raspberry Pi CM4 INSIDE

### Broadcom BCM2711

- 4核Cortex-A72 1.5GHz 64-bit CPU
- 支持H.264, H.265解码, 支持4K视频播放
- 支持OpenGL ES 3.0

### DDR

- LPDDR, 高达3200MT/s
- 1GB | 2GB | 4GB | 8GB 可选

### Storage

- 8GB | 16GB | 32GB eMMC可选
- 同时支持micro SD卡数据存储



## 感知世界, 汇聚云端

### 支持多种传感网络

- 4x RS485
- 1x RS232
- 1x CAN
- Bluetooth 5.0

### 支持多种上行网络

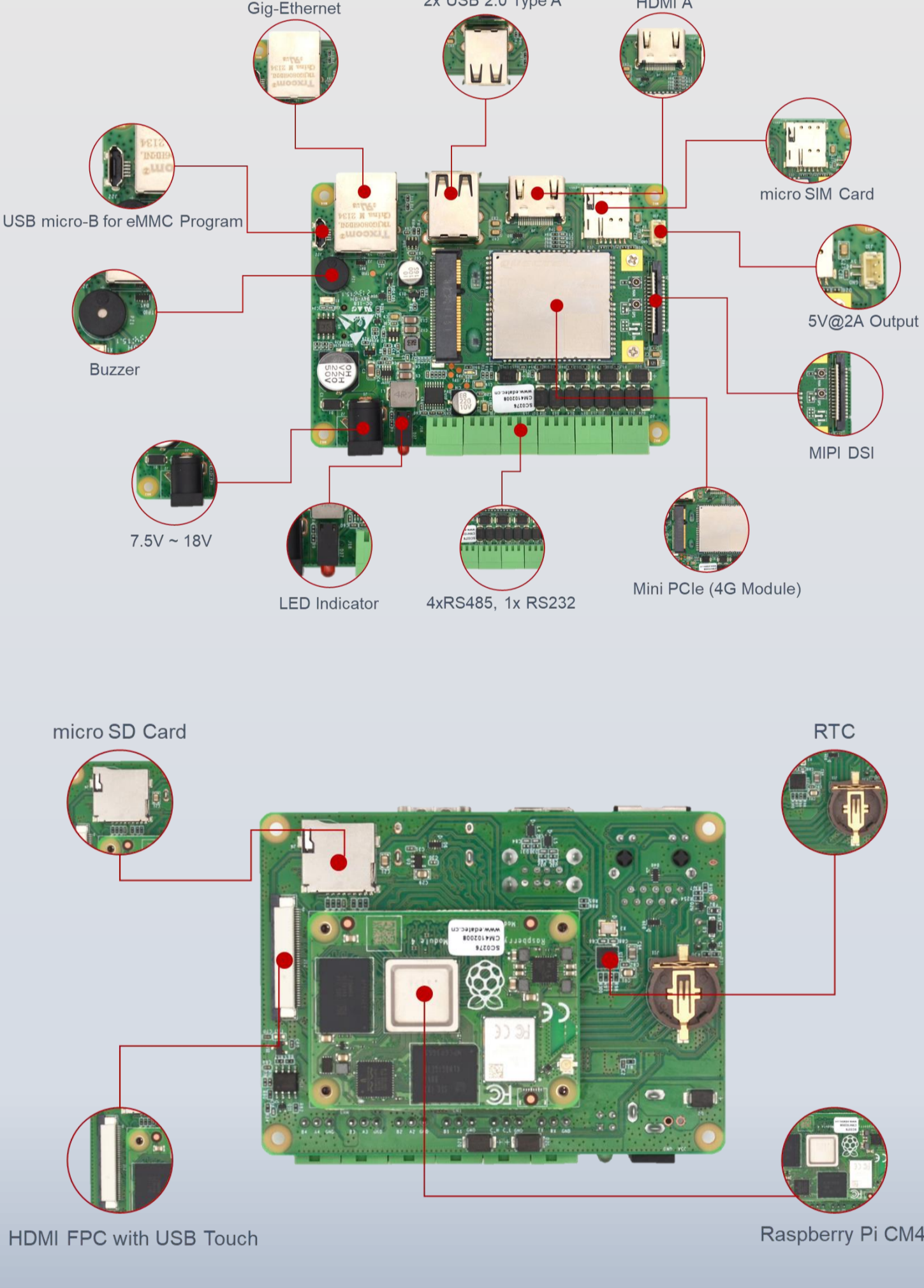
- 千兆以太网
- 双频WiFi
- 可选支持4G LTE

### 支持双存储方案

- eMMC for OS
- 同时支持扩展SD卡支持数据存储

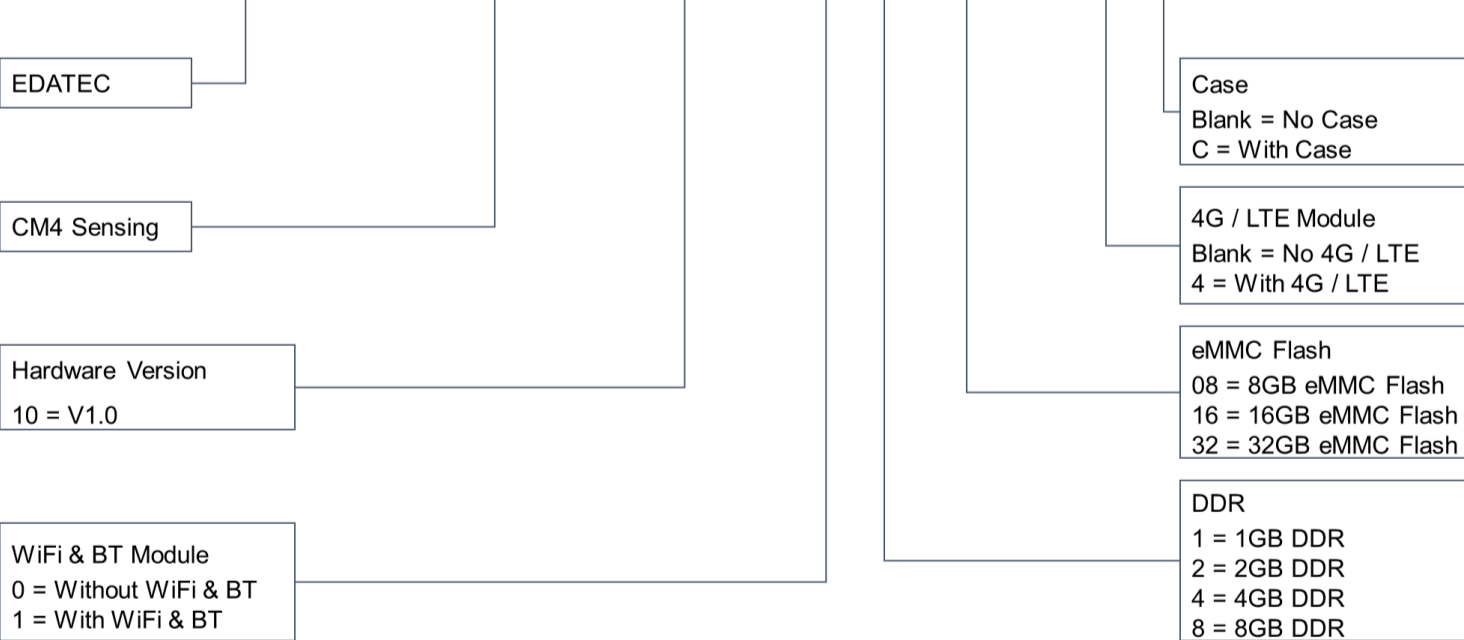


## 接口框图



## 订购编码

ED - CM4SEN 10 - 0 2 32 - 4 C



## 产品参数

Item	Feature
CPU	Broadcom BCM2711 Quad Core, Cortex-A72(ARM v8), 1.5GHz, 64-bit CPU
DDR	1GB / 2GB / 4GB / 8GB
eMMC Flash	8GB / 16GB / 32GB
SD Card	SD Card store the data when CM4 eMMC is stored OS
Ethernet	1x 10 / 100 / 1000M Ethernet
WiFi / BT	2.4G / 5.8G Dual-band WiFi, Bluetooth 5.0
4G LTE	Could Support Quctel EC20 / EC25 4G LTE Module
HDMI	1x HDMI A
HDMI FPC	1x HDMI with USB Touch
DSI	1x DSI, Raspberry Pi 7" Official Pi Display
USB	2x USB 2.0 Type A, 1x USB 2.0 on mini-PCIe, 1x USB micro-B for eMMC Program
RS485	4x RS485
RS232	1x RS232, Could be configured as system console or a common Serial Port
CAN Network	1x CAN
Mini PCIe	1-lane PCIe 2.0, up to 5Gbps, 1x USB 2.0
RTC	1x RTC
Buzzer	1x Buzzer
DC Output	5V@1A
LED Indicator	RED(Power), GREEN(System Status)
Power In	7.5V ~ 18V
Dimension	103(L) x 73(W) x 32(H) mm
Case	Full Metal Case, Support <b>DIN Rail Mount</b>
Heat Sink	1x Whole Side Aluminum Alloy Heat Sink
Antenna	Support WiFi / BT External Antenna, 4G External Antenna
Ambient Temperature	Full speed running at -25 ~ 60°C
OS	Compatible with Official Raspberry Pi OS, Support BSP online install and update with APT tool

<http://www.edatec.cn>